



# ONE SIZE DOES NOT FIT ALL

## EXPLORING THE BOUNDARIES OF DESIGN & INCLUSIVE UX

Actionable insights on current design trends to help create experiences that emotionally resonate, are beautifully engaging, and yet, delightfully accessible.

Funka Accessibility Days  
Stockholm, Sweden  
April 14<sup>th</sup>, 2016



# WHEN DID YOU FIRST FALL IN LOVE WITH THE WEB?



FOR ME, IT WAS 1997. MONKEY.COM.

“

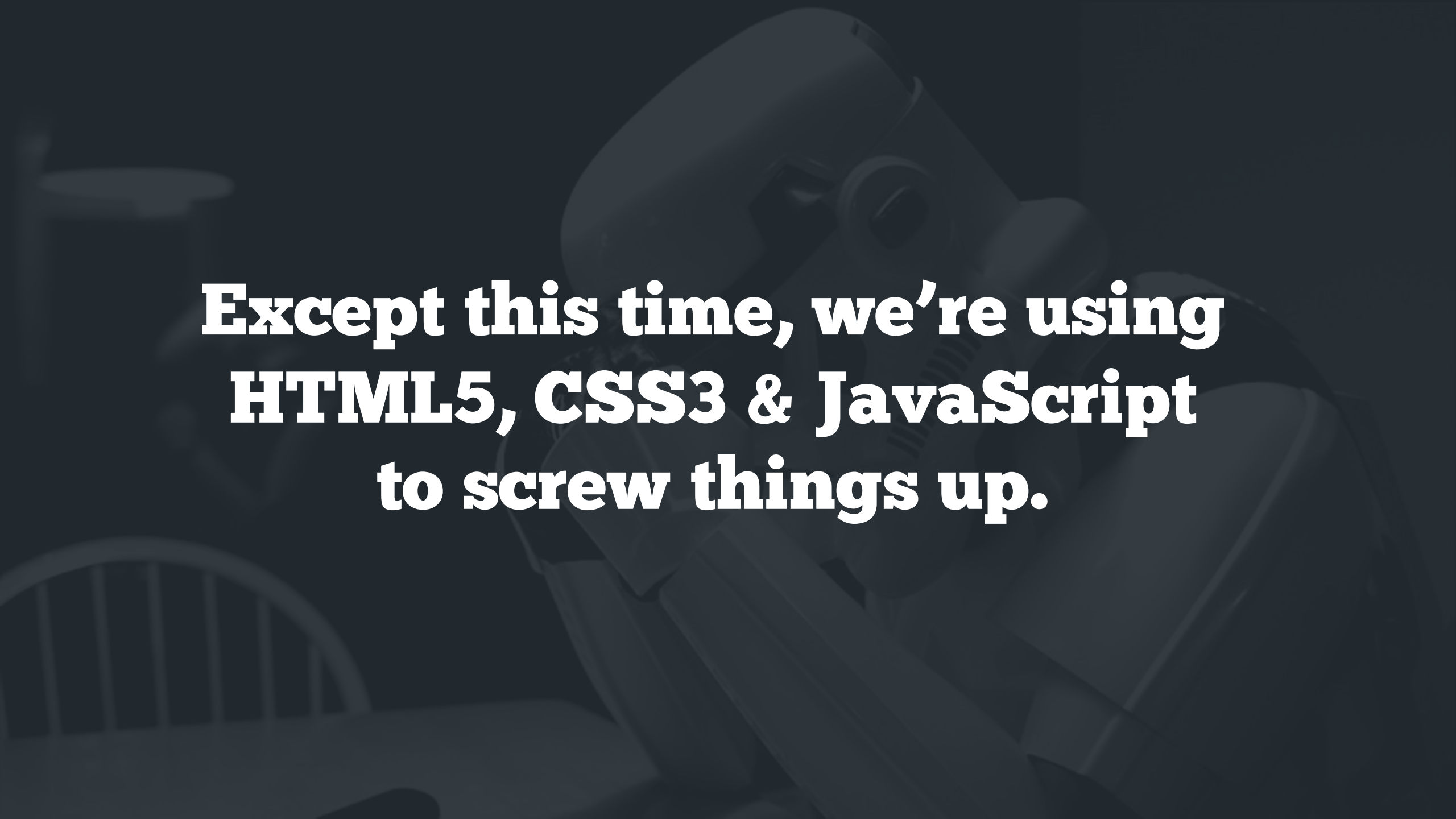
**It feels like this is 1997  
all over again.**

”



**WENDY CHISHOLM**

SENIOR ACCESSIBILITY STRATEGIST, MICROSOFT



**Except this time, we're using  
HTML5, CSS3 & JavaScript  
to screw things up.**

# WHAT, YOU DON'T BELIEVE ME?

AWWWARDS®

HOME WINNERS NOMINEES DIRECTORY SHOP JOBS BLOG ABOUT US [SUBMIT YOUR SITE](#) 🔍

Friday 05, June

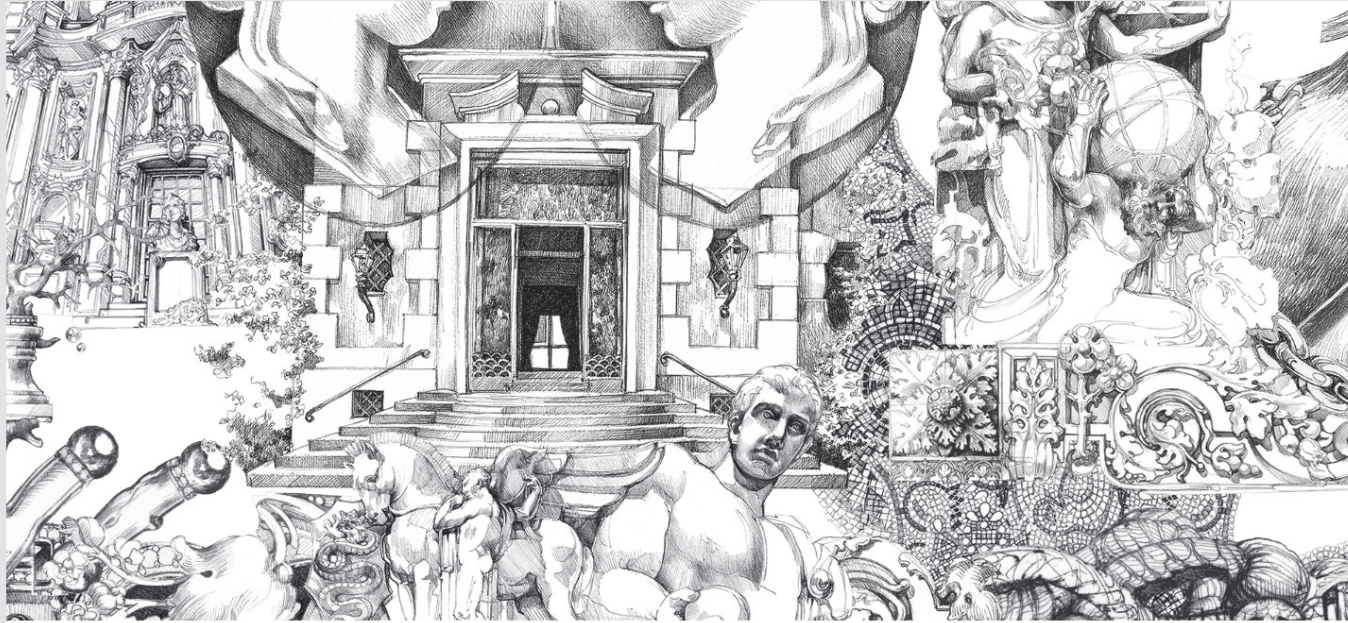
## Giampiero Bodino 🌟


By Liip (Switzerland) Mazarine

Giampiero Bodino - Italian High Jewellery - Villa Mozart, Milano

DESIGN	USABILITY	CREATIVITY	CONTENT	AVERAGE
7.82	6.72	7.86	7.28	7.44

90 ❤️



*Giampiero Bodino* I. Giampiero Bodino II. Capi d'Opera III. Ad Personam IV. Villa Mozart Contact Press Legal  Follow us

<http://www.giampierobodino.com/>



**Which begs the question...  
What have we learned  
these past 20 years?**



# DENIS BOUDREAU

---

User eXperience. Accessibility. Inclusive Design. Gamification. Empathy.  
Empowering all users. Geek. Introvert. Pragmatism. Good design = inclusive design.

**Deque Systems / Knowbility / W3C**



@dboudreau



# ACCESSIBILITY / UX PERSONAS

ARE YOUR AVERAGE USERS DIFFERENT THAN MINE?



**ADAM ALLENDER**  
TECHNICAL WRITER



**ANJA BLACK**  
NURSE PRACTITIONER



**MARC LEWIS**  
SOFTWARE DEVELOPER



**AMY C. BECK**  
ASL TEACHER & INTERPRETER



**EMMA JONES**  
CUSTOMER SERVICE REPRESENTATIVE

We're all people. Disability is just another trait to consider.



@dboudreau



Charcot-Marie-Tooth disease    Bipolar disorders    **Achromatopsia**    **Alzheimer's disease**    Asperger's syndrome  
Tendinitis    Corneal opacification    **AUDITORY**    Nearsightedness    Retinoblastoma  
Learning difficulties    Down syndrome    Narcolepsy    **Vestibular disorders**  
Dyspraxia    Acquired brain injuries    Photoepileptic seizures    **VISUAL**  
Noise-induced hearing loss    Anomalous trichromacy    **Getting older**    Fuchs' dystrophy  
Huntington's disease    Spino-cerebellar ataxia    Muscle slowness    Lazy Eyes    **Dyscalculia**

**And many, many more!**

Neurodiversity    Chemo brain    Deuteranomaly    Muscular dystrophy    Tunnel vision  
Carpal tunnel syndrome    Astigmatism    **Deafness**    Dichromacy    Vertigo  
Arthritis    Neurodegenerative diseases    Directionally challenged  
Dysorthographia    Tritanopia    **Dementia**    Developmental disabilities    Language barriers  
Tremors    Age-related macular degeneration    **COGNITIVE**    Benign paroxysmal positional vertigo  
Trachoma    **Color blindness**    Sleep deprivation    Monochromacy    Post-concussion syndrome  
Multiple sclerosis    Deuteranopia    Hard of hearing    Attention deficit disorders    Protanomaly  
ADHD    Dysgraphia    **MOTOR**    Retinal detachment    Gamer's thumb    Difficulty concentrating  
Amyotrophic lateral sclerosis    Dysphasia    Diabetic retinopathy    Aphantasia  
**Autism spectrum disorders**    Reading disorders    **Low vision**    Chronic migraines  
Cystic Fibrosis

1 000 000 000 +



# MEET ADAM

## TECHNICAL WRITER

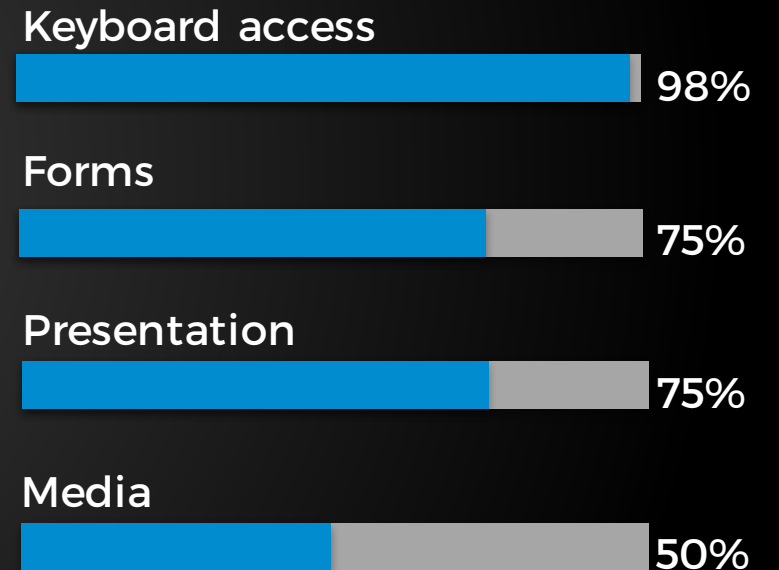


ADAM ALLENDER

56 YEARS OLD

On good days, Adam has no problem using a computer. But on bad days, when his arthritis really kicks in, using a mouse or typing on a keyboard is just too painful. So he turns to tools like voice recognition instead. Adam also runs into issues now and then with colors used on sites, especially for links, as he is colorblind.

### MAIN ISSUES



# MEET ANJA

## NURSE PRACTITIONER



ANJA BLACK

32 YEARS OLD

Anja has ADD (attention deficit disorder) which makes reading and writing more difficult to her than most people. Thoughtful page layout & font choices often help her, but staying focused is hard. Especially at night, when she's tired. She also recently noticed feeling dizziness and even nausea on certain sites, when content moves too much.

### MAIN ISSUES

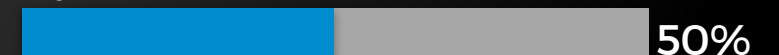
Presentation



Structure



Dynamic content



# MEET MARK

## SOFTWARE DEVELOPER



MARK LEWIS

37 YEARS OLD

Mark progressively lost his sight following a severe car accident where he suffered a critical head trauma. As a blind user, he no longer uses a mouse and has no need for a monitor. But he keeps using the web everyday. He now relies exclusively on a keyboard and screen reader software to use computers, work and navigate the web.

### MAIN ISSUES

Keyboard access



Structure



Forms



Images



# MEET AMY

## ASL TEACHER AND INTERPRETER



AMY C. BECK

41 YEARS OLD

Deaf since birth, Amy was introduced to American sign language (ASL) way before she began to learn English. As a result, she regularly struggles with content, even to this day. She was diagnosed with dyslexia at a young age, and English is only a second language to her. Media content is often unusable, and walls of text put her off.

### MAIN ISSUES

Media



Static text



Structure



# MEET EMMA

## CUSTOMER SERVICE REPRESENTATIVE



EMMA JONES

25 YEARS OLD

Emma has always had poor eyesight. Everything she looks at is perceived as if looking through a straw. Her glaucoma affects not only her ability to see, but also the speed at which she can read content. The computer screen brightness also hurts her eyes, so she tends to use invert color features when they're available.

### MAIN ISSUES

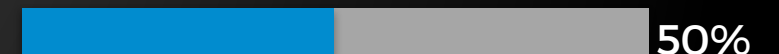
Presentation



Multimedia



Forms





**When UX fails to consider ALL users,  
shouldn't it be known as "SOME UX"  
or... **SUX?****



**BILLY GREGORY**

WEB ACCESSIBILITY CONSULTANT, THE PACIELLO GROUP

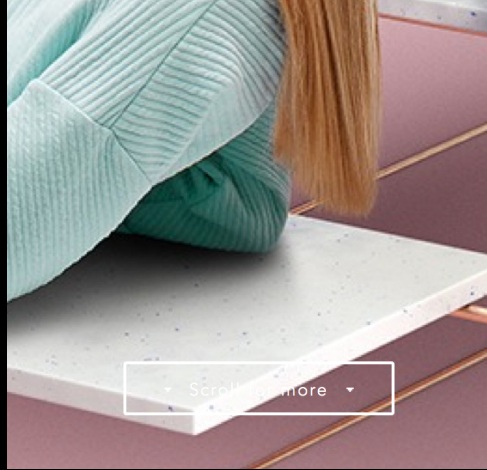




# CURRENT DESIGN TRENDS



# GHOST BUTTONS



Scroll for more



# PARALLAX SCROLLING



# THE BOAT

BASED ON THE STORY BY NAM LE  
ADAPTATION BY MATT HUYNH  
PRODUCED BY SBS

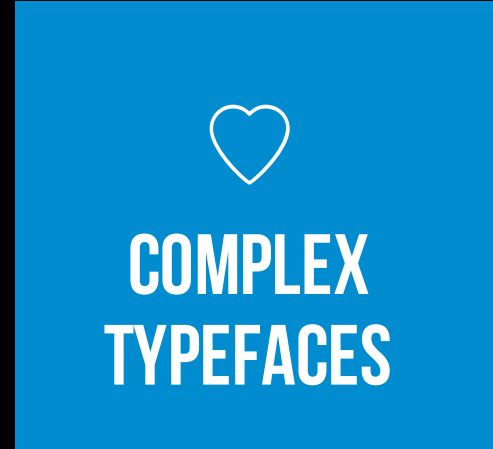
Scroll



# ENDLESS SCROLLING



# COMPLEX TYPEFACES



new.

This is a freelance art director web designer,  
graphic designer and illustrator website

**YOU ARE LOOKING FOR  
A MENU TO NAVIGATE  
PLEASE USE YOUR POWER**

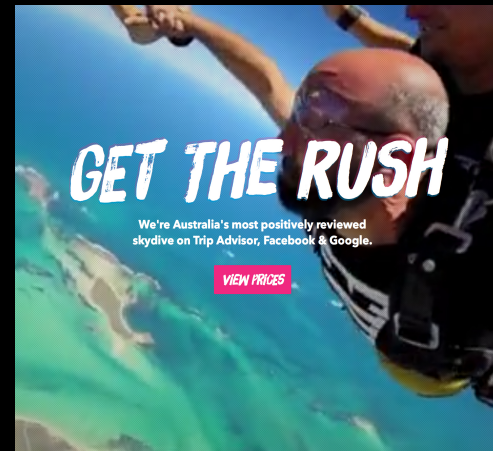


NO AT T DOVA

# GET THE RUSH

We're Australia's most positively reviewed  
skydive on Trip Advisor, Facebook & Google.

[VIEW PRICES](#)



# CINEMAGRAPHS

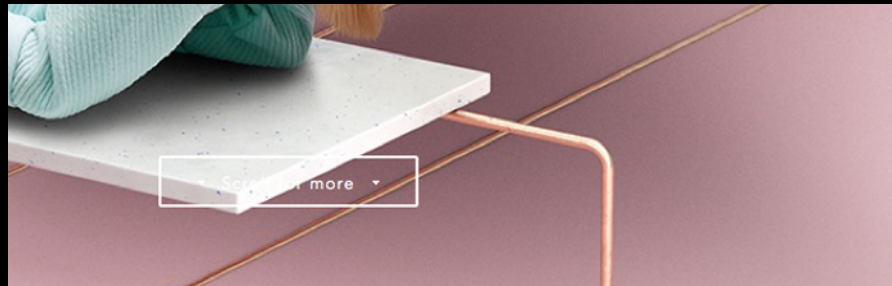
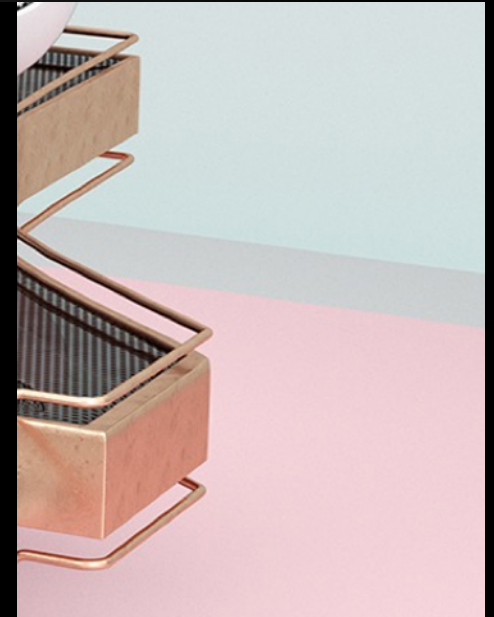


# DESIGN TREND NO. 1

## GHOST BUTTONS



GHOST BUTTONS



@dboudreau



# GHOST BUTTONS

## DESIGN TREND NO. 1



I get that these buttons are very popular. It feels like every site uses them these days. They may be considered slick and trendy, but I can barely perceive them because they're so thin. I often can't even make out what the text says against the background either.



**ADAM ALLENDER**

ARTHRITIS, COLOR BLINDNESS



**ANJA BLACK**

ADD, VESTIBULAR DISORDER



**MARK LEWIS**

BLINDNESS



**AMY C. BECK**

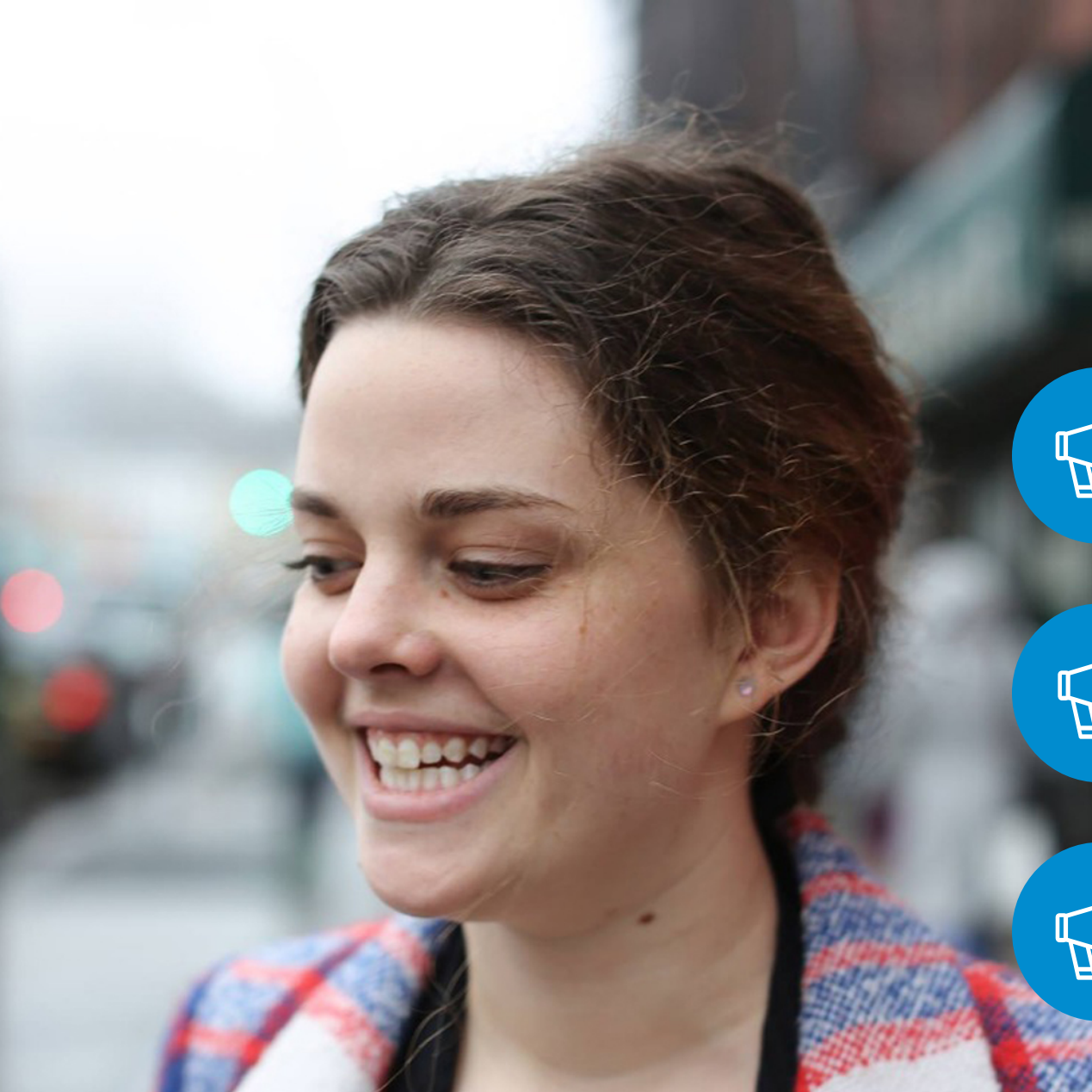
DEAFNESS, DYSLEXIA



**EMMA JONES**

LOW VISION, GLAUCOMA





# ACCORDING TO EMMA

## ISSUES WITH GHOST BUTTONS



### A PROXIMITY ISSUE

“As someone who uses screen magnification, distance between objects is really important. These buttons are often lost for me and consequently, very difficult to find.”



### A CONTRAST ISSUE

“These buttons are so thin and light, they’re often harder to notice against the details provided in the underlying image. It’s not uncommon for me to miss them entirely.”



### WHY WOULD ANYONE PURPOSEFULLY DESIGN THIS?

“I don’t get it. Why would anyone design buttons that are difficult to notice, hard to read, and ultimately, unusable? I mean, don’t they want us to find them?”



# DESIGN TIPS

## DEALING WITH GHOST BUTTONS

246M

Estimated number of people around the world with low vision issues, according to the World Health Organization (WHO).



Provide ghost buttons with background color and sufficient contrast, so the text clearly stands out.



Choose background images carefully, so the buttons always display in an area that is free of clutter.



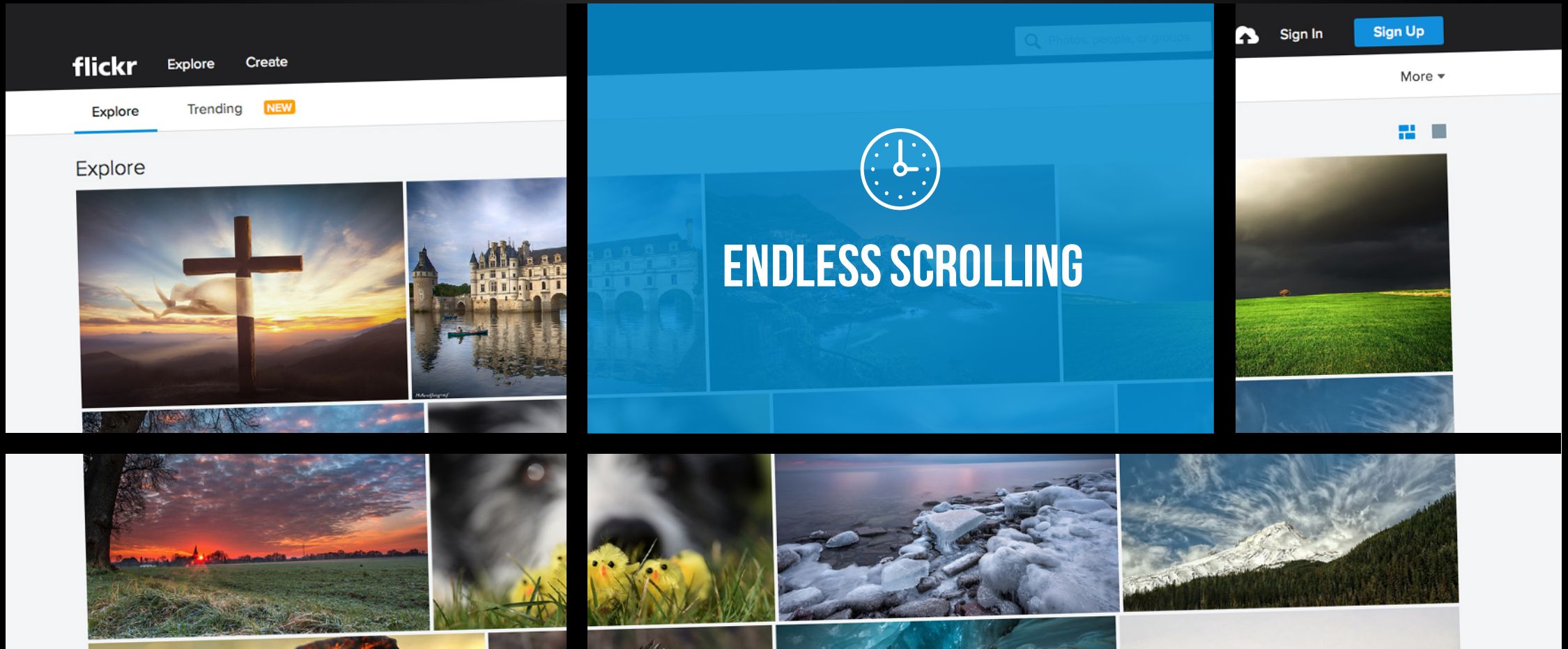
Be mindful of placement and proximity, so the buttons don't end up being lost in the page.



Run extensive user testing sessions with people who are color blind or have low vision.

# DESIGN TREND NO. 2

## ENDLESS SCROLLING



# ENDLESS SCROLLING

## DESIGN TREND NO. 2



I'm trying to reach the links in the footer, but new content keeps loading every time I get near. How many times am I expected to hit the TAB key before I can finally reach what I need? Sometimes, the pain will get so intense, I have no other option but to give up.



**ADAM ALLENDER**

ARTHRITIS, COLOR BLINDNESS



**ANJA BLACK**

ADD, VESTIBULAR DISORDER



**MARK LEWIS**

BLINDNESS



**AMY C. BECK**

DEAFNESS, DYSLEXIA



**EMMA JONES**

LOW VISION, GLAUCOMA







# ACCORDING TO ADAM

## ISSUES WITH ENDLESS SCROLLING



### A DISCOVERY ISSUE

“As someone who can’t use a mouse, I’m frustrated to be unable to keep track of where I am in the page because no visible indicators are provided when I hit the TAB key.”



### A FUNCTIONALITY ISSUE

“I don’t think the people who built this realize that not everyone uses the web the way they do. When each TAB is an effort, using the site becomes a painful experience.”



### WHY WOULD ANYONE PURPOSEFULLY DESIGN THIS?

“I don’t get it. Why would anyone design a page with important information located in the footer, or in an area that is virtually impossible to reach?”





ADAM ALLENDER — ARTHRITIS, COLOR BLINDNESS



# DESIGN TIPS

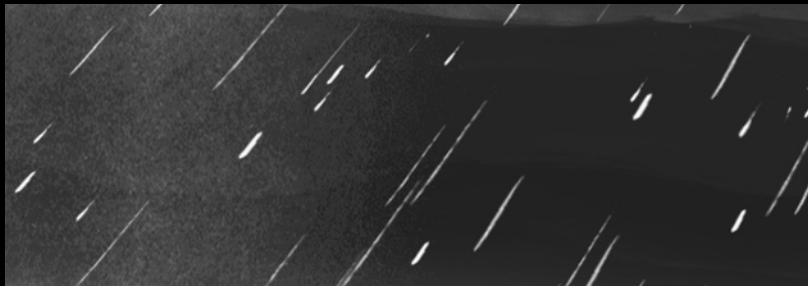
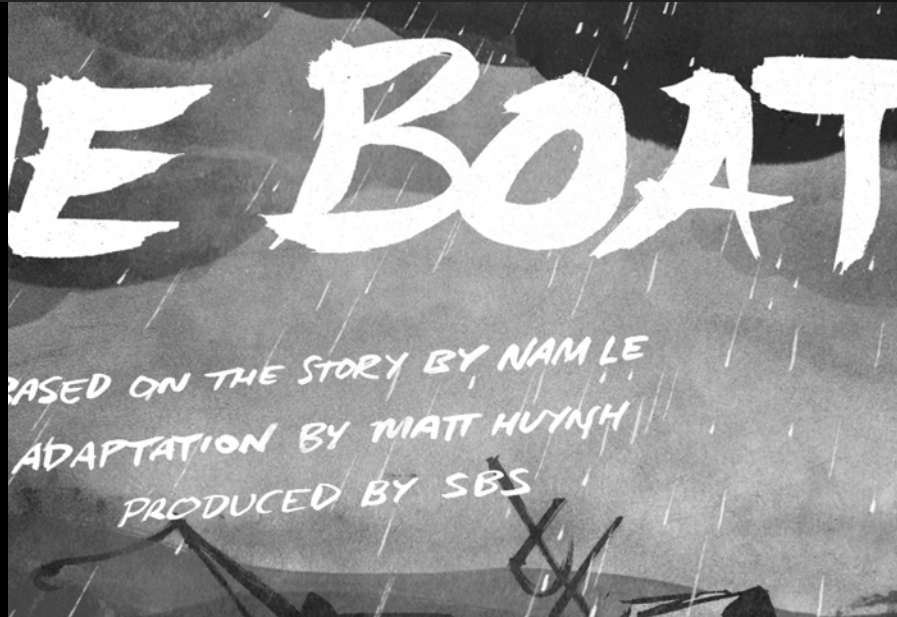
## DEALING WITH ENDLESS SCROLLING

**100%** | Estimated number of people around the world who hate sites that use endless scrolling, then provide info in the footer.

-  Make sure objects that get focus with the mouse also receive focus when tabbed to, using the keyboard.
-  Provide a visible focus indicator that clearly identifies each object that is meant to grab focus.
-  Design a mechanism to turn off endless scrolling, and provide a quick link to bypass the main content.
-  Run extensive user testing sessions with people who navigate using only the keyboard.

# DESIGN TREND NO. 3

## PARALLAX SCROLLING



# PARALLAX SCROLLING

## DESIGN TREND NO. 3



There's an increasingly high number of sites that use movement these days. I see longer pages with big background images that move at a different speed than the rest of the page, creating a feeling of depth. After a while, I just have to close my browser... it makes me feel dizzy and sick.



**ADAM ALLENDER**

ARTHRITIS, COLOR BLINDNESS



**ANJA BLACK**

ADD, VESTIBULAR DISORDER



**MARK LEWIS**

BLINDNESS



**AMY C. BECK**

DEAFNESS, DYSLEXIA



**EMMA JONES**

LOW VISION, GLAUCOMA





# ACCORDING TO ANJA

## ISSUES WITH PARALLAX SCROLLING



### AN ETHICAL ISSUE

“I can’t spend more than a few minutes on some of these sites before I start feeling nauseated, kind of like when I’m reading in a car. I now avoid those sites. It’s not worth it.”



### A FUNCTIONALITY ISSUE

“I’m no expert, but it seems to me these moving effects are only decorative, but they keep distracting me. Why can’t they provide us with ways to turn all of this off?”



### WHY WOULD ANYONE PURPOSEFULLY DESIGN THIS?

“I don’t get it. Why would anyone design a page that has effects that can make some people feel sick? Don’t they care about the well-being of their users?”

ANJA BLACK — ADD, VESTIBULAR DISORDER



# THE BOAT

*BASED ON THE STORY BY NAM LE  
ADAPTATION BY MATT HUYNH  
PRODUCED BY SBS*

# DESIGN TIPS

## DEALING WITH PARALLAX SCROLLING

### 35%

Estimated number of US adults aged 40 and over who may experience feelings of motion sickness on sites that use parallax effects.



Limit the number of animations and movement effects in the page, so they are used parsimoniously.



Provide a warning on page load, to inform users about risks for people with vestibular disorders.



Provide a means to disable parallax, so users can quickly switch to a static version, if need be.



Run extensive user testing sessions with people who are diagnosed with vestibular disorders.

# DESIGN TREND NO. 4

## COMPLEX TYPEFACES

*hello.*

This is a freelance art director web designer,  
graphic designer and illustrator website

**IF YOU ARE LOOKING FOR  
A MENU TO NAVIGATE,  
PLEASE USE YOUR POWER**

**&**

**SCROLL DOWN**



COMPLEX TYPEFACES



@dboudreau



# COMPLEX TYPEFACES

## DESIGN TREND NO. 4



About two years ago, I started noticing a wide variety of new fonts being used on sites. It was cute at first, but as people began using new fonts in their designs, content also became much harder to read. Adapting to all those fonts on each site is a huge pain in the neck. A lot of them are so hard to read!



**ADAM ALLENDER**

ARTHRITIS, COLOR BLINDNESS



**ANJA BLACK**

ADD, VESTIBULAR DISORDER



**MARK LEWIS**

BLINDNESS



**AMY C. BECK**

DEAFNESS, DYSLEXIA



**EMMA JONES**

LOW VISION, GLAUCOMA







# ACCORDING TO **AMY**

## ISSUES WITH COMPLEX TYPEFACES



### A READABILITY ISSUE

“When too many words are presented using complex fonts, it makes it much more difficult for me to be able to read the words. It feels confusing and cluttered.”



### A LEGIBILITY ISSUE

“As someone who mostly uses the web on my iPad and iPhone, I often find these fancy fonts don’t render well on smaller screens. I wish they did though, some look pretty.”



### WHY WOULD ANYONE PURPOSEFULLY DESIGN THIS?

“I don’t get it. Why would anyone create a page that uses weird-looking fonts that are hard to read? Isn’t design supposed to help make the content easier to use?”

AMY C. BECK — DEAFNESS, DYSLEXIA



**DON'T WORRY,  
KEEP ON SCROLLING.**

**D'SIGN  
TECHNO  
LGY**



*and i could be everything you need*

**SO, CONTACT ME NOW.  
AS YOU PREFER  
MAIL, PHONE, SOCIAL**

**PHONE ME**  
**+39 328 91 64 301**  
IT'S A MOBILE NUMBER

**FOLLOW ME**  
  
CLICK ON THE SOCIAL ICONS

**MAIL ME**  
**ok, click here**  
THIS IS ONE OF MANY OTHERS

# DESIGN TIPS

## DEALING WITH COMPLEX TYPEFACES

17%

Estimated percentage of people around the world who have some form of dyslexia, according to Dr. Tasman, Kentucky U.



Try to limit the use of complex typefaces to elements like headings, titles, value propositions, slogans, etc.



Make sure your custom typeface renders well, and is legible across various browsers and devices.



Refrain from using complex typefaces for blocks of written text or body copy.



Run extensive user testing sessions with people who are diagnosed with various forms of dyslexia.

# DESIGN TREND NO. 5

## CINEMAGRAPHS



@dboudreau



# CINEMAGRAPHS

## DESIGN TREND NO. 5



I've been told that an increasingly high number of sites have started using full-screen background videos on their pages to create compelling, visual storytelling experiences. I'm growing increasingly concerned about where this will lead us in terms of user navigation.



**ADAM ALLENDER**

ARTHRITIS, COLOR BLINDNESS



**ANJA BLACK**

ADD, VESTIBULAR DISORDER



**MARK LEWIS**

BLINDNESS



**AMY C. BECK**

DEAFNESS, DYSLEXIA



**EMMA JONES**

LOW VISION, GLAUCOMA





MARK LEWIS — BLINDNESS

# ACCORDING TO MARK

## ISSUES WITH CINEMAGRAPHS



### A FINDABILITY ISSUE

“When content is embedded as part of the background, it becomes impossible for my screen reader to pick it up. It could just as well not be there at all.”



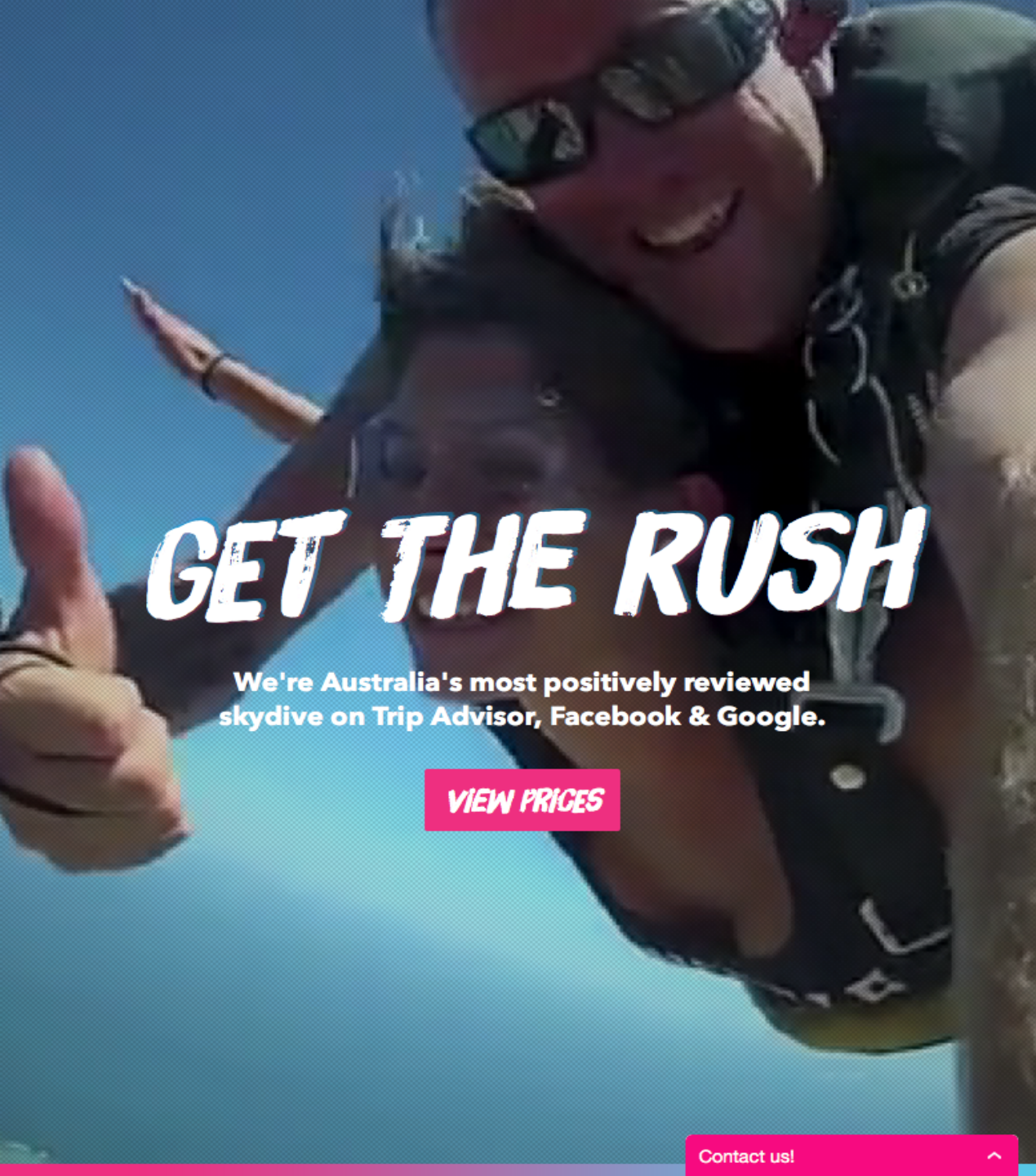
### AN ETHICAL ISSUE

“With innovations like the Oculus Rift and immersive virtual reality, I am increasingly worried about what this trend will mean for people like me in the future.”



### WHY WOULD ANYONE PURPOSEFULLY DESIGN THIS?

“I don’t get it. Why would anyone use CSS to convey information? Haven’t they heard about the virtues of separating presentation, structure and behavior by now?”



# GET THE RUSH

We're Australia's most positively reviewed skydive on Trip Advisor, Facebook & Google.

[VIEW PRICES](#)

[Contact us!](#)

# DESIGN TIPS

## DEALING WITH CINEMAGRAPHS

39M

Estimated number of people around the world who are completely blind, according to the World Health Organization (WHO).



Refrain from embedding informative content (video or image) as part of the background of the page.



Non-sighted people want to live the experience, too! Provide text transcripts and audio descriptions.



Switch to Windows High Contrast, to see how those elements hold up for people who have low vision.



Run extensive user testing sessions with people who are blind. Are they missing on any of the fun?



# RECOMMENDATIONS

“

**There is no such thing  
as an average pilot.**

”



**GILBERT S. DANIELS**

MILITARY RESEARCHER, AERO MEDICAL LABORATORY



# Funka

## Accessibility Days



**There is no such thing as an **average user.****

# DESIGNING FOR THE EXTREMES

LETTING THE MIDDLE TAKE CARE OF ITSELF



PEOPLE WITH  
DISABILITIES



PEOPLE  
GETTING OLDER



YOUR  
"AVERAGE USERS"



PEOPLE USING  
TABLET DEVICES



PEOPLE USING  
SMART PHONES

# A DESIGNER'S RESPONSIBILITIES

BECAUSE DESIGN IS MORE THAN JUST PRETTY COLORS

Design for everyone  
regardless of abilities

## 1. ETHICAL



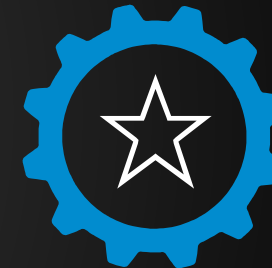
Design for the  
common good

## 3. PHILANTHROPIC



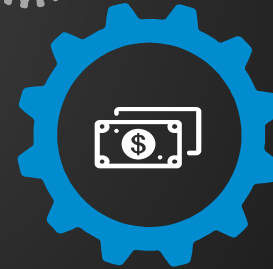
Design to push  
your own limits

## 5. PERSONAL



## 2. LEGAL

Design according to  
standards & laws



## 4. ECONOMIC

Design to increase  
market shares



“

**Good design is obvious.  
Great design is transparent...**

”



**JOE SPARANO**

DESIGNER, OXIDE DESIGN CO.

**Great design is  
also inclusive!**

The background is a dark, muted blue. In the lower right quadrant, there is a faint, high-angle photograph of a pen and a notebook. The pen is a ballpoint pen with a dark blue body and a silver-colored tip. The notebook is a dark blue cover with a lighter blue page visible. The overall aesthetic is professional and minimalist.

# QUESTIONS & COMMENTS



**STAY IN TOUCH!**

denis.boudreau@deque.com  
+1 (514) 730-9168  
@dboudreau



# TACK SÅ MYCKET

ACCESSIBLE DESIGN PROVIDES A BETTER USER EXPERIENCE FOR EVERYONE.



[facebook.com/boudden](https://facebook.com/boudden)



[ca.linkedin.com/in/dboudreau](https://ca.linkedin.com/in/dboudreau)



[twitter.com/dboudreau](https://twitter.com/dboudreau)



[skype.com/denisboudreau](https://skype.com/denisboudreau)

# GUILTY PARTIES\*



## GENERAL NAVIGATION EXAMPLE SITE

Giampiero Bodino - High jewelry, Milano  
<http://www.giampierobodino.com/>



## GHOST BUTTONS EXAMPLE SITE

Benoit Challand - Creative image maker  
<http://www.benoitchalland.com/>



## ENDLESS SCROLLING EXAMPLE SITE

Flickr  
<https://www.flickr.com/explore>



## PARALLAX SCROLLING EXAMPLE SITE

SBS - The Boat  
<http://www.sbs.com.au/theboat/>



## COMPLEX TYPEFACES EXAMPLE SITE

Nicola Cozzolino - Art director & designer  
<http://www.nicolacozzolino.com/>



## CINEMAGRAPH EXAMPLE SITE

Skydive Jurien Bay - Australia  
<https://skydivejurienbay.com/>

\* sincere apologies for any bruised egos.



deque